

FINAL ENGINEERING CERTIFICATE

I hereby certify that this plat is true and correct and contains sufficient engineering information to permit the plat to be located on the ground. All monuments correctly shown. I further certify that all engineering requirements of the Gilmer County Subdivision Standards have been complied with.

Date: September 24, 1987 Registered Land Surveyor License No. 347
W. A. D. H. Registered Land Surveyor
 Norman B. DeLoach, 411 Central Ave. Dalton, Ga. 30720
 Phone 404-278-9955

CERTIFICATE OF APPROVAL FOR PRIVATE SURFACE SEWER DISPOSAL

I hereby certify that each lot shown hereon, unless otherwise noted, is suitable for subsurface sewage disposal.

Date: 9/23/87
 Gilmer County Health Department Representative: _____

CERTIFICATE OF APPROVAL OF STREETS AND DRAINAGE

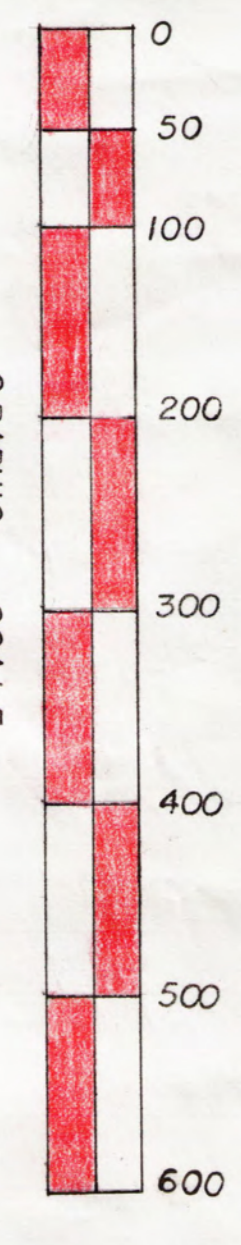
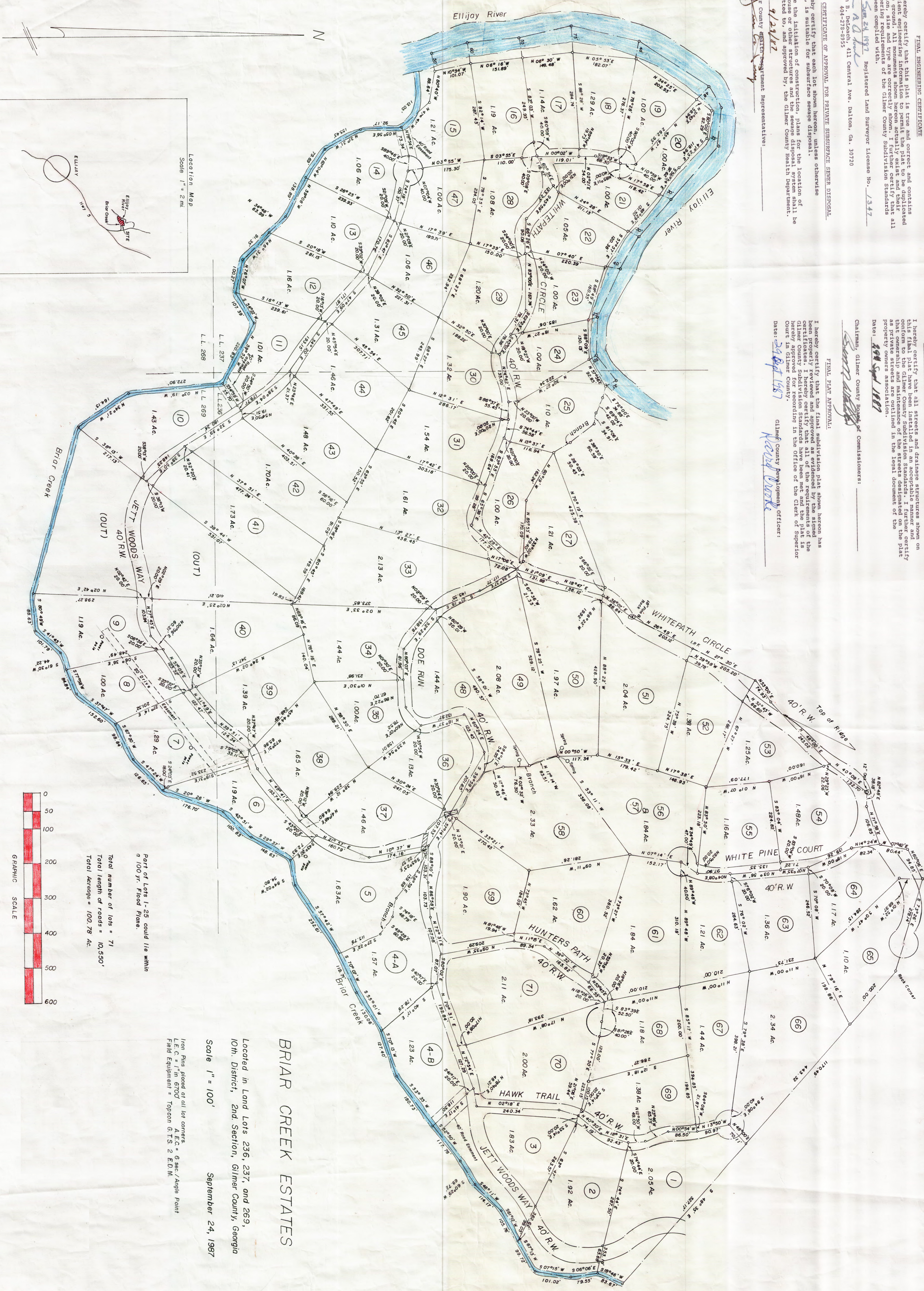
I hereby certify that all streets and drainage structures shown on this final plat have been installed in an acceptable manner and conform to the requirements of the Gilmer County Subdivision Standards. I further certify that all streets shown on this plat are suitable for recordation in the legal document of the property owners association.

Date: September 24, 1987
 Chairman, Gilmer County Board of Commissioners: _____
 Gilmer County Development Officer: _____

FINAL PLAT APPROVAL:

I hereby certify that the final subdivision plat shown hereon has been properly reviewed and approved as to the requirements of the Gilmer County Subdivision Standards have been met and the plat is hereby approved for recordation in the Office of the Clerk of Superior Court in Gilmer County.

Date: September 24, 1987
 Gilmer County Development Officer: _____



Part of Lots 1-25 could lie within a 100 yr. Flood Plane.
 Total number of lots = 71
 Total length of roads = 10,550'
 Total acreage = 100.78 Ac.

BRIAR CREEK ESTATES
 Located in Land Lots 236, 237, and 289,
 10th District, 2nd Section, Gilmer County, Georgia
 Scale 1" = 100'
 September 24, 1987

Iron Pins placed at all lot corners.
 L.E.C. = 1/4" 670' A.E.C. = 6 sec./Angle Point
 Field Equipment = Topcon G.T.S. 2 EDM.